

# SATs Revision grids

## PLACE VALUE

Draw a line to matching statements

- |                |   |                  |   |
|----------------|---|------------------|---|
| $6 \times 7$   | ● | $600 \times 0.7$ | ● |
| $2.1 \times 2$ | ● | $210 \times 20$  | ● |
| $42 \times 10$ | ● | $42 \div 10$     | ● |
| $84 \times 50$ | ● | $84 \times 0.5$  | ● |

## MEASUREMENT



**David**  
10 miles  
30 miles per hour



**Antonia**  
18 kilometres  
36 kilometres per hour



**Amina**  
15,000 metres  
20,000 metres per hour

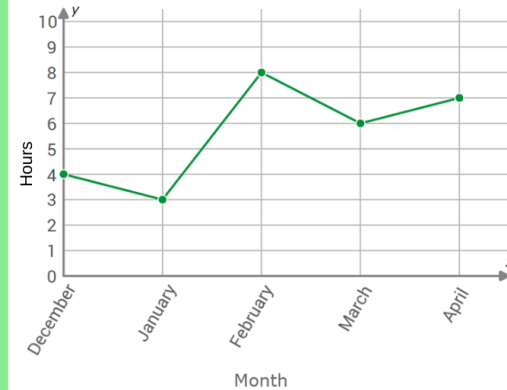
Who cycled the furthest? \_\_\_\_\_

Who cycled the fastest? \_\_\_\_\_

Who spent the most time cycling? \_\_\_\_\_

## Line Graphs

Hours Alina spent gaming



Which month does Alina spend the most time gaming?  
\_\_\_\_\_

How much less time does she spend gaming in December than in April?  
\_\_\_\_\_

How many hours does she spend gaming altogether between December and April?  
\_\_\_\_\_

What is the average amount of time she spent gaming each month between December and April?  
\_\_\_\_\_

$$\begin{array}{r} 3876 \\ \times 24 \\ \hline \end{array}$$

$$\frac{3}{4} \times \frac{2}{7} =$$

$$5\frac{2}{5} - 3\frac{5}{6} =$$

$$20\% \text{ of } 85 = 50 -$$

## FRACTION-DECIMAL-PERCENTAGES

Use < or > or = to make the statements correct

$\frac{1}{3}$ of 60		25% of 80
$20 \times 0.3$		$\frac{2}{3}$ of 12
95% of 80		$10 \times 7.5$



# SATs Revision grids

## PLACE VALUE

Draw a line to matching statements

$6 \times 7$		$600 \times 0.7$
$2.1 \times 2$		$210 \times 20$
$42 \times 10$		$42 \div 10$
$84 \times 50$		$84 \times 0.5$

## MEASUREMENT



**David**  
10 miles/ 16km  
30 miles per hour/  
48km per hour  
20 mins



**Antonia**  
18 kilometres  
36 kilometres per hour  
30 mins



**Amina**  
15,000 metres/ 15km  
20,000 metres per hour/  
20km per hour  
45 mins

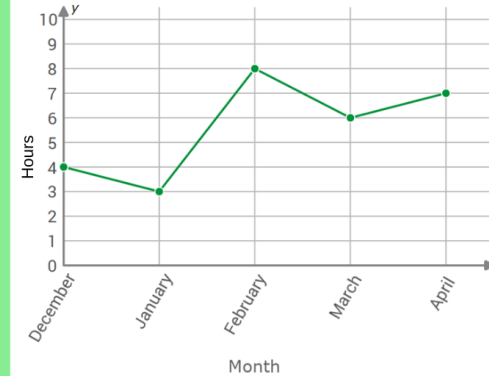
Who cycled the furthest? Antonia

Who cycled the fastest? David

Who spent the most time cycling? Amina

## Line Graphs

Hours Alina spent gaming



Which month does Alina spend the most time gaming?

February

How much less time does she spend gaming in December than in April?

3 hours

How many hours does she spend gaming altogether between December and April?

28 hours

What is the average amount of time she spent gaming each month between December and April?

5.6 hours

	3	8	7	6
x			2	4
1	5	5	0	4
7	7	5	2	0
9	3	0	2	4

$$\frac{3}{4} \times \frac{2}{7} = \frac{6}{28} \text{ or } \frac{3}{14}$$

$$5\frac{2}{5} - 3\frac{5}{6} = \frac{47}{30}$$

$$\frac{27}{5} - \frac{23}{6} =$$

$$\frac{162}{30} - \frac{115}{30} = \frac{47}{30}$$

$$20\% \text{ of } 85 = 50 - 33$$

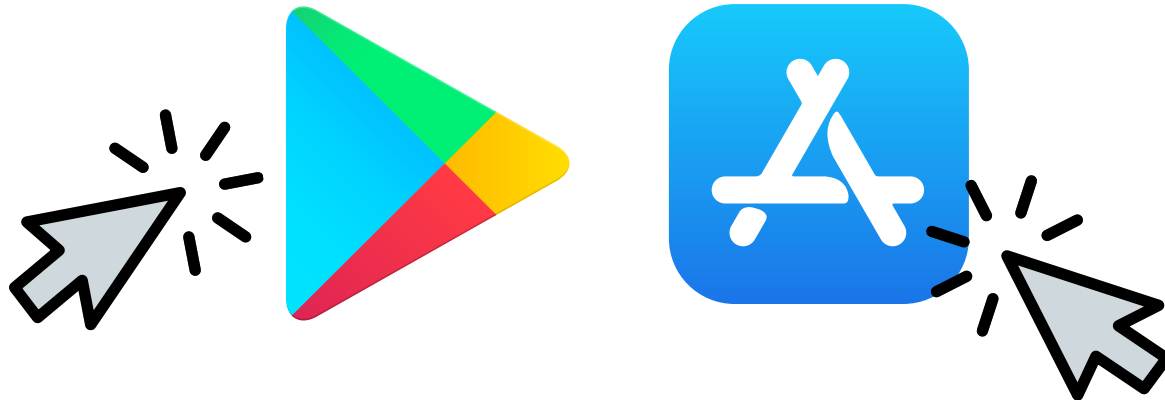
## FRACTION-DECIMAL-PERCENTAGES

Use < or > or = to make the statements correct

$\frac{1}{3}$ of 60	=	25% of 80
$20 \times 0.3$	<	$\frac{2}{3}$ of 12
95% of 80	>	$10 \times 7.5$

# Would you like more revision Grids delivered straight to your inbox?

Download the SATs revision app (for free) and you will receive a revision grid to support your child every week.



[www.pocketprivatetutor.co.uk](http://www.pocketprivatetutor.co.uk)

