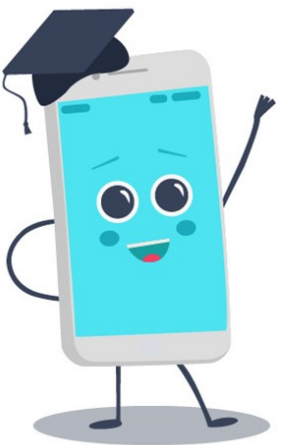


# Converting units of measure chart

BASE UNIT						
<i>kilo gram</i> - <i>kilo metre</i>			<i>gram</i> <i>litre</i> <i>metre</i>		<i>centi gram</i> <i>centi litre</i> <i>centi metre</i>	<i>mili gram</i> <i>mili litre</i> <i>mili metre</i>
1000	100	10		0.1 $\frac{1}{10}$	0.01 $\frac{1}{100}$	0.001 $\frac{1}{1000}$
0	0	0	1	0	0	0



$$0.001\text{kg} = 1\text{g} = 1000\text{mg}$$

## How to use:

Laminate the first page if you want to be able to reuse it. You could also put it inside a plastic wallet. Cut out the strips on this page. Write in the measurement in the correct place on the chart. ( Example– 1 gram)

To convert this to a mg, place the strip over the chart headings and line up the green 1 over the mg heading. This column now becomes the “ones” column and the 1 is now in the thousand column.

$$1\text{g} = 1000\text{mg}$$

To convert it to a kg, place the strip over the chart headings and line up the green 1 over the kg heading. The 1 is now in the “thousandth” column

$$0.001\text{kg} = 1\text{g}$$

100,000	10,000	1,000	100	10	1
---------	--------	-------	-----	----	---

1	$\frac{0.1}{1}$ 10	$\frac{0.01}{1}$ 100	$\frac{0.001}{1}$ 1000
---	-----------------------	-------------------------	---------------------------

