


Multiply multi-digit numbers up to 4 digits by a two-digit whole number using the formal written method of long multiplication

$$\begin{array}{r}
 4372 \\
 \times \quad ?8 \\
 \hline
 166136
 \end{array}$$

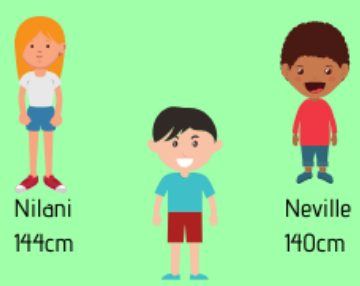
Recognise, describe and build simple 3D shapes including making nets

What 3D shape does this net build?



Calculate and interpret the mean as an average

The mean height of Nilani, Anton & Neville is 143cm.

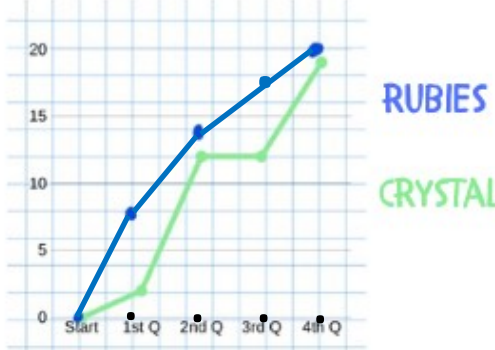


Nilani 144cm
Neville 140cm

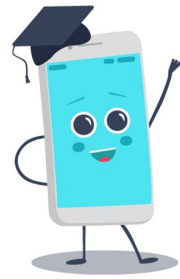
How tall is Anton?

Interpret and construct line graphs and use these to solve problems

A graph to show the score during a netball match

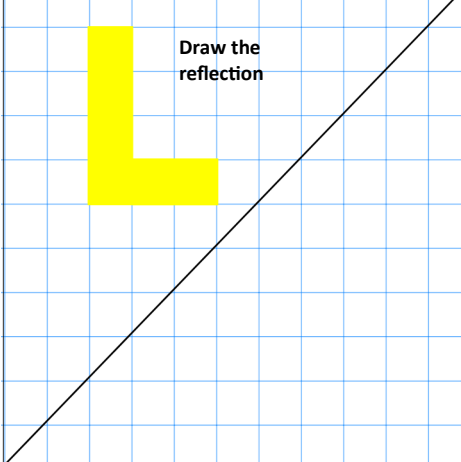


Which team scored the most goals between the 1st and 2nd quarter?



Year 6 SATs revision grid

Reflect simple shapes in the axes



Convert between miles and kilometres

Who ran further?




Rhia - 15 miles Jasper - 20 km

Compare and order fractions including fractions > 1

Use < = > to compare the fractions

$$\frac{3}{4} \square \frac{3}{5} \qquad \frac{6}{9} \square \frac{2}{3} \qquad \frac{4}{6} \square \frac{6}{8}$$

Read, write, order & compare numbers up to 10,000,000 & determine the value of each digit



A: 9,099,999 VIEWS
B: 9,200,000 VIEWS
C: 9,111,111 VIEWS

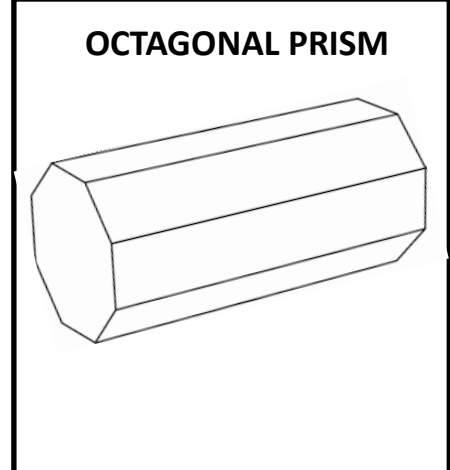
Put the videos in order from least to most views.

LEAST VIEWS MOST VIEWS

Multiply multi-digit numbers up to 4 digits by a two-digit whole number using the formal written method of long multiplication

$$\begin{array}{r}
 4372 \\
 \times 38 \\
 \hline
 34976 \\
 131160 \\
 \hline
 166136
 \end{array}$$

Recognise, describe and build simple 3D shapes including making nets

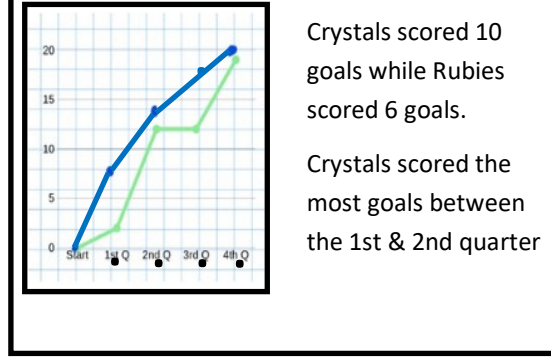


Calculate and interpret the mean as an average

The mean height of Nilani, Anton & Neville is 143cm.

Nilani 144cm
Anton is 145cm
Neville 140cm

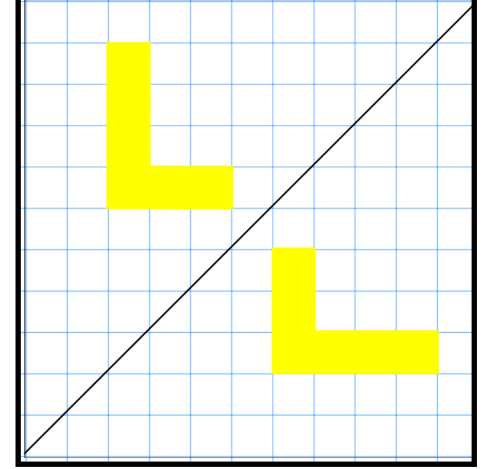
Interpret and construct line graphs and use these to solve problems



Revision grid

ANSWERS

Reflect simple shapes in the axes



Convert between miles and kilometres

Rhia ran further.

Rhia - 15 miles or 24 km
Jasper - 20 km or 12.5 miles

Compare and order fractions including fractions > 1

Use < = > to compare the fractions

$$\frac{3}{4} < \frac{3}{5} \qquad \frac{4}{6} > \frac{6}{8}$$

$$\frac{6}{9} = \frac{2}{3}$$

Read, write, order & compare numbers up to 10,000,000 & determine the value of each digit

A B C

9,099,999 VIEWS 9,200,000 VIEWS 9,111,111 VIEWS

Put the videos in order from least to most views.

LEAST VIEWS **A** **C** **B** MOST VIEWS